

Super password

We need two tools to calculate the super password :



“Encrypt tool.exe”



“Decrypt tool.exe”

First, NVR need to connect network. Then search the nvr ip address through “IPCsearch” tool.

Index	Model	Device Name	Firmware Version	IP address	Subnet Mask	GateWay	DNS
1	NVR	NVR	NVR_HI3535_16_v5.1.28	192.168.10.251	255.255.255.0	192.168.10.1	202.96.134.133
2	NVR	NVR	NVR_HI3535_25_v5.1.51	192.168.1.88	255.255.255.0	192.168.1.1	202.96.134.133
3	NVR	HVR	HVR_HI3521_16_v6.1.1	192.168.10.204	255.255.255.0	192.168.10.1	192.168.10.1
4	NVR	NVR	NVR_HI3535_25_v5.1.51	192.168.10.240	255.255.255.0	192.168.10.1	191.168.10.1
5	NVR	NVR	NVR_HI3535_16_v5.1.28	192.168.10.252	255.255.255.0	192.168.10.1	192.168.10.1
6	IPCAMERA	OnlineDemo	3516A+IMX178_5.1.26...	192.168.10.216	255.255.254.0	192.168.10.1	192.168.10.1
7	IPCAMERA	IPC	HI3516D+OV4689_5.1...	192.168.11.100	255.255.254.0	192.168.10.1	192.168.10.1
8	IPCAMERA	IPC	3518C_IMX225_X_5.1...	192.168.10.231	255.255.255.0	192.168.10.1	192.168.10.1
9	IPCAMERA	IPC	S2L33M_IMX322_X_5...	192.168.10.173	255.255.255.0	192.168.10.1	192.168.10.1
10	IPCAMERA	IPC	S2L33M_IMX322_X_5...	192.168.10.158	255.255.255.0	192.168.10.1	192.168.10.1
11	IPCAMERA	IPC	S2L33M_IMX322_X_5...	192.168.10.241	255.255.255.0	192.168.10.1	192.168.10.1
12	IPCAMERA	IPC	S2L55M_IMX124_X_5...	192.168.10.161	255.255.254.0	192.168.10.1	192.168.10.1
13	IPCAMERA	IPC	S2L33M_IMX322_X_5...	192.168.10.242	255.255.255.0	192.168.10.1	192.168.10.1
14	IPCAMERA	IPC	3516C_IMX322_X_5.1...	192.168.10.175	255.255.255.0	192.168.10.1	192.168.10.1
15	IPCAMERA	IPC	A5566_IMX322_X_5.1...	192.168.10.238	255.255.254.0	192.168.10.1	192.168.10.1
16		IPD-L21C00-BS		192.168.10.244	255.255.255.0	192.168.10.1	
17		SANK		192.168.10.167	255.255.255.0	192.168.10.1	
18		IPCamera		192.168.10.253	255.255.255.0	192.168.10.1	

Ver. 6.1.4.2 ☒ Onvif MultitudeNetmask

IP Address: 192 . 168 . 1 . 88

Subnet Mask: 255 . 255 . 255 . 0

GateWay: 192 . 168 . 1 . 1

DNS: 202 . 96 . 134 . 133

HTTP Port: 80

RTSP Port: 554

☐ DHCP Enable

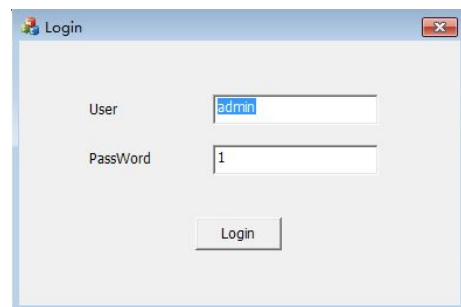
Username: admin

Password:

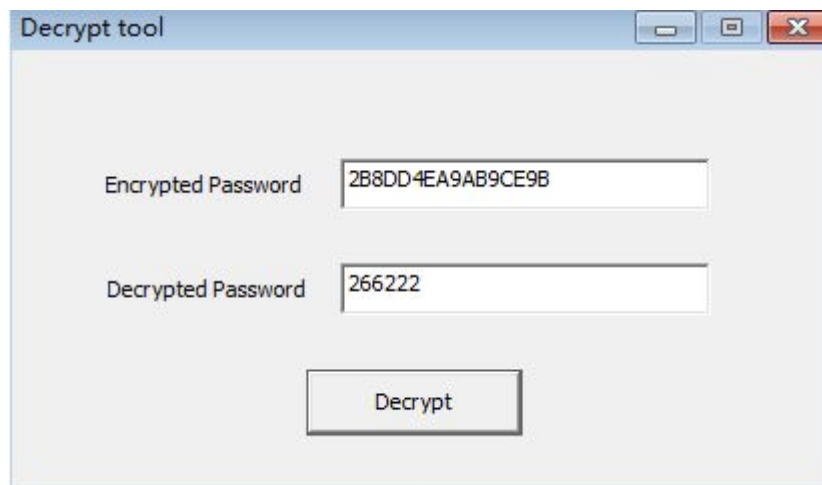
Open the “Encrypt tool.exe”, input the nvr’s ip address and click “Get encrypted password”.



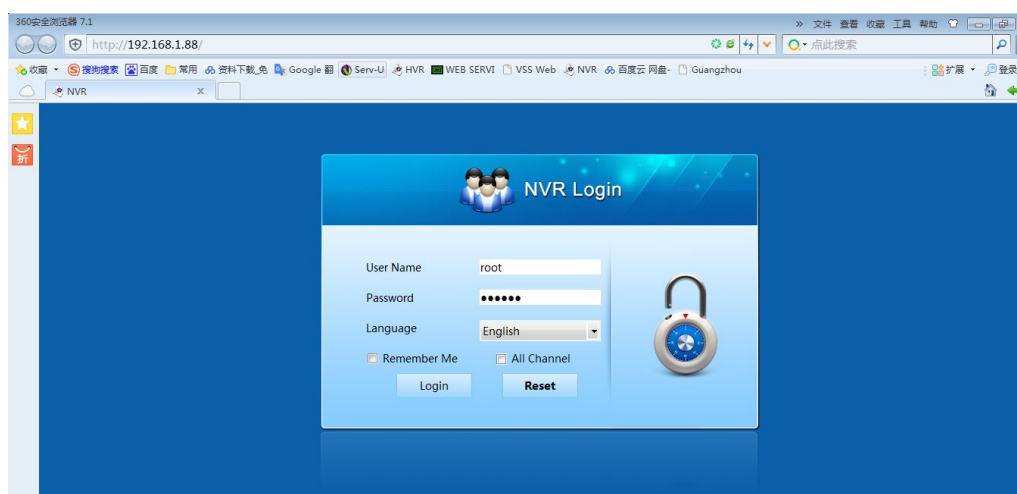
3.Open the “Decrypt tool.exe” and login.



4.After login, Input the “Encrypt tool.exe” and get “ Encrypted password”,then click “Decrypt” , get the NVR super password.



5.on the IE or local UI menu, Through the super user “root”and super password login the NVR.



6. After login, we can modify the nvr new password.

Logout

Advance Setup

Basic Setup

LiveVideo

System

Common

Network

User

SMTP Setup

DDNS Setup

Channel

Record

Maintain

User

Save

Exist User

admin

Video backup

Log

Operate

Modify

Basic Setup

Front-end configuration

User Name

admin

Rec Setup

Network

New Password

PTZ

Display Settings

Confirm Password

Default

Ch Setup

Formatting the hard drive

User

System Upgrade

Preview Configuration

Auto Maintenance

Shutdown / Restart

Made by:guo